



GAT MONTHLY MEMBERSHIP PROGRESS REPORT

Results as of: 6/30/2022

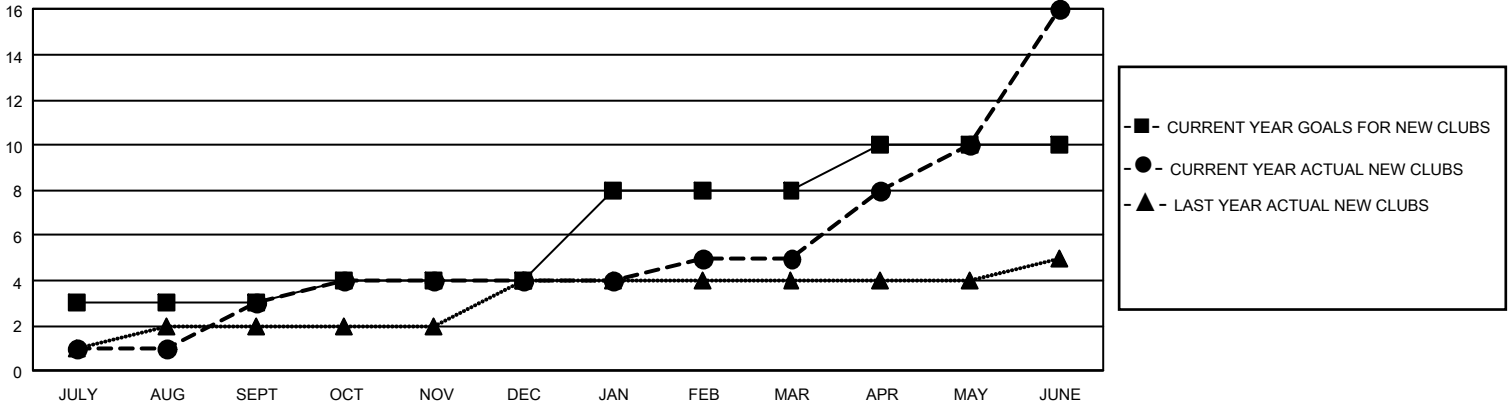
GMT Constitutional Area 3, Group J

REPORT DOES NOT INCLUDE CLUBS IN UNDISTRICTED AREAS.

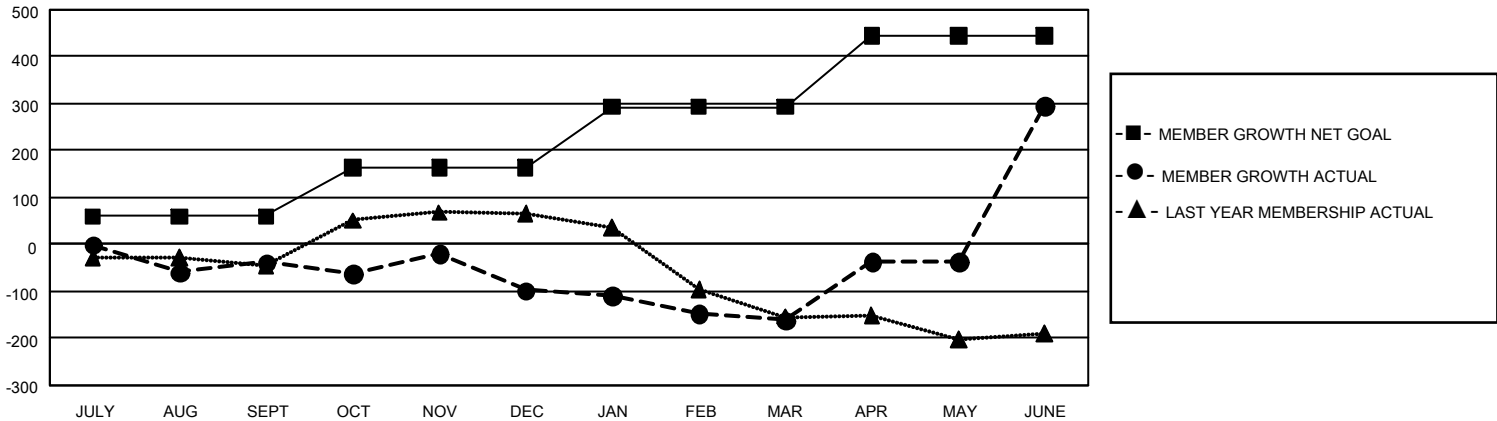
Clubs			
RESULTS FOR 2021-2022			
QUARTER	NEW CLUB GOAL	NEW CLUBS	DROPPED CLUBS
JULY/AUG/SEPT	9	3	5
OCT/NOV/DEC	3	1	3
JAN/FEB/MAR	12	1	2
APR/MAY/JUNE	6	11	1

Members			
RESULTS FOR 2021-2022			
QUARTER	MEMBER GROWTH NET GOAL	MEMBER GROWTH ACTUAL	DROPPED MEMBERS ACTUAL (including transfers)
JULY/AUG/SEPT	60	170	185
OCT/NOV/DEC	103	244	279
JAN/FEB/MAR	130	123	148
APR/MAY/JUNE	151	766	260

GOALS AND ACTUAL NEW CLUBS CUMULATIVE



GOALS AND ACTUAL MEMBERS CUMULATIVE



DROPPED CLUBS: 10	136 CLUBS OF 211 ADDED 1 OR MORE NEW MEMBERS	<u>GENDER DISTRIBUTION</u>	
<u>DROPPED MEMBERS</u>		MALE	3,017 (54.39%)
DECEASED	73	FEMALE	2,528 (45.57%)
CLUB CANCELLED	124	NON BINARY	1 (0.02%)
OTHER	675	PREFER NOT TO ANSWER	1 (0.02%)
TOTAL	872	TOTAL FAMILY UNIT MEMBERS	2,299
	CLICK HERE FOR CUMULATIVE MEMBERSHIP DATA	FAMILY MEMBERS PAYING HALF DUES	1,212